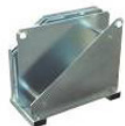
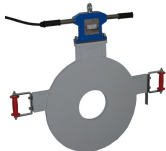
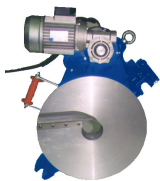


KL 500 Butt fusion machine for construction site



Butt Fusion machine to joint PE, PP, PB pipes and fittings for pressure piping systems on building sites and in trenches.

Hydraulically operated with manual control unit (Hydromat).

Separate remote temperature controller for the heating element (KL TOP2).

Control box with integrated temperature controller and power outlets (KL TOP1).

Performance: PE up to d 500 mm SDR 11; PP up to d 500 mm SDR 26.

Including transport packaging (wooden crate); reduction clamping inserts and other accessories to be ordered separately.

• BASE MACHINE

- High precision design, distortion-free and sturdy machine frame
- Good accessibility thanks to 45° inclination
- The movable (sliding) 3rd clamp allows easy and time-saving fixation of bends or tees without need of additional tools
- Double-sided heating element pull-off mechanism to optimise the change-over phase
- Weight: 157 kg

• HYDRAULIC UNIT

- Compact and robust, with full closed cast aluminium housing (Hydromat)
- Precise pressure setting and fine adjusting
- Joystick operation of machine carriage
- Clearly visible, vibration-free pressure gauge with precision scaling
- Accumulator for pressure equalization during the cooling phase
- Max operating pressure: 160 bar
- Weight: 31 kg
- Input power: 230V/1500W

• PLANER

- Powerful parallel planer for single or double-sided facing of pipe ends
- Self-locking mechanism in working position
- Safety microswitch to prevent undesired start-up
- Weight: 58 kg
- Input power: 400 V / 750 W

• HEATING ELEMENT

- High performance, electronically controlled heating element
- High-quality, non-stick PTFE-coating with long service life
- Temperature indicator integrated into the handle
- Weight: 26 kg
- Input power: 400 V / 4000 W

• CONTROL BOX

- Only with KL TOP1
- Contains all safety and functional components such as static relay, FI protective switch, temperature control
- Compact unit in steel box with enamel-coated protective frame
- Integrated power outlets for all machine components, only 1 plug to the generator
- Weight: 15 kg

• CASE

- For safe storage of planer and heating element
- Weight: 38 kg

Type	d-d (mm)	Performance	Code	Weight (kg)
KL 500 TOP2	200 - 500	400 V/6250 W	790 140 010	463.000
KL 500 TOP1	200 - 500	400 V/6250 W	790 340 000	475.000

The technical data are not binding. They neither constitute expressly warranted characteristics nor guaranteed properties nor a guaranteed durability. They are subject to modification. Our General Terms of Sale apply.

Georg Fischer Piping Systems Ltd, Postfach, CH-8201 Schaffhausen/Switzerland

Phone +41 -(0)52-631 1111

e-mail: info.ps@georgfischer.com

Data sheet

valid from: 10/10/17



Internet: <http://www.gfps.com>