

Diaphragm valves



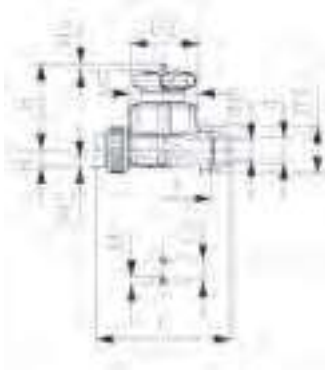
Diaphragm valve type 514 PVC-U With solvent cement sockets metric

Model:

- Double flow rate compared to predecessor
- One housing nut replaces four screws
- Handwheel with built-in locking mechanism
- For easy installation and removal
- Short overall length

Option:

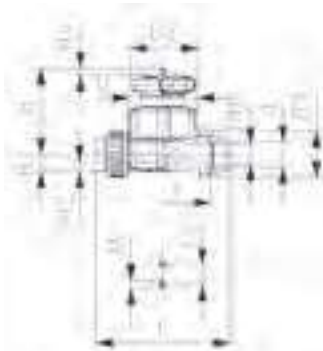
- Individual configuration of the valve (see diagram)
- Self adjusting multifunctional module with integrated limit switches
- PN16 available as a configuration



d (mm)	DN (mm)	PN (bar)	kv-value ($\Delta p=1$ bar) (l/min)	NBR Code	Weight (kg)	EPDM Code	Weight (kg)	PTFE/EPDM Code	Weight (kg)
16	10	10	125	161 514 001	0.305	161 514 011	0.303	161 514 031	0.306
20	15	10	125	161 514 002	0.398	161 514 012	0.295	161 514 032	0.298
25	20	10	271	161 514 003	0.428	161 514 013	0.423	161 514 033	0.428
32	25	10	481	161 514 004	1.161	161 514 014	0.673	161 514 034	1.181
40	32	10	759	161 514 005	0.958	161 514 015	0.965	161 514 035	0.977
50	40	10	1263	161 514 006	1.625	161 514 016	1.624	161 514 036	1.658
63	50	10	1728	161 514 007	2.501	161 514 017	2.488	161 514 037	2.547

d (mm)	FPM Code	Weight (kg)	PTFE/FPM Code	Weight (kg)
16	161 514 061	0.310	800 047 300	0.420
20	161 514 062	0.302	800 047 301	0.420
25	161 514 063	0.691	800 047 303	0.560
32	161 514 064	0.691	800 047 304	1.210
40	161 514 065	0.982	800 047 306	1.540
50	161 514 066	2.516	800 047 308	2.680
63	161 514 067	2.546	800 047 309	2.581

d (mm)	D (mm)	D2 (mm)	D3 (mm)	H (mm)	H1 (mm)	H2 (mm)	L (mm)	L2 (mm)	M	z (mm)	Lift = Hx (mm)	closest inch (inch)
16	65	65	43	73	14	12	170	25	M6	142	7	3/8
20	65	65	43	73	14	12	128	25	M6	96	7	1/2
25	80	65	51	81	18	12	152	25	M6	114	10	3/4
32	88	87	58	107	22	12	166	25	M6	122	13	1
40	101	87	72	115	26	15	192	45	M8	140	15	1 1/4
50	117	135	83	148	32	15	222	45	M8	160	19	1 1/2
63	144	135	100	166	39	15	266	45	M8	190	25	2



Diaphragm valve type 514 PVC-U
With solvent cement sockets metric PN16

Model:

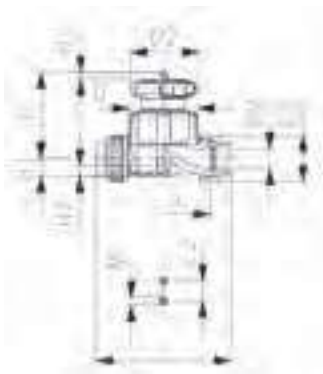
- Double flow rate compared to predecessor
- One housing nut replaces four screws
- Handwheel with built-in locking mechanism
- Not recommended for oxidizing acids
- For easy installation and removal
- Short overall length

Option:

- Individual configuration of the valve (see diagram)
- Self adjusting multifunctional module with integrated limit switches

d (mm)	DN (mm)	PN (bar)	kv-value ($\Delta p=1$ bar) (l/min)	EPDM Code	Weight (kg)	PTFE/EPDM Code	Weight (kg)
20	15	16	125	800 047 166	0.420	800 047 160	0.420
25	20	16	271	800 047 167	0.560	800 047 161	0.560
32	25	16	481	800 047 168	1.210	800 047 162	1.210
40	32	16	759	800 047 169	1.005	800 047 163	1.540
50	40	16	1263	800 047 170	1.706	800 047 164	2.680
63	50	16	1728	800 047 171	3.630	800 047 165	3.630

d (mm)	D (mm)	D2 (mm)	D3 (mm)	H (mm)	H1 (mm)	H2 (mm)	L (mm)	L2 (mm)	M	z (mm)	Lift = Hx (mm)	closest inch (inch)
20	65	65	43	73	14	12	128	25	M6	96	7	½
25	80	65	51	81	18	12	152	25	M6	114	10	¾
32	88	87	58	107	22	12	166	25	M6	122	13	1
40	101	87	72	115	26	15	192	45	M8	140	15	1 ¼
50	117	135	83	148	32	15	222	45	M8	160	19	1 ½
63	144	135	100	166	39	15	266	45	M8	190	25	2



Diaphragm valve type 514 PVC-U
With threaded sockets Rp

Model:

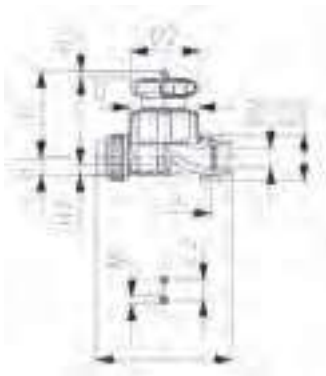
- Double flow rate compared to predecessor
- One housing nut replaces four screws
- Handwheel with built-in locking mechanism
- For easy installation and removal
- Short overall length

Option:

- Individual configuration of the valve (see diagram)
- Self adjusting multifunctional module with integrated limit switches
- PN16 available as a configuration

Rp (inch)	DN (mm)	PN (bar)	kv-value ($\Delta p=1$ bar) (l/min)	NBR Code	Weight (kg)	EPDM Code	Weight (kg)	PTFE/EPDM Code	Weight (kg)
½	15	10	125	161 514 402	0.400	161 514 412	0.298	161 514 432	0.410
¾	20	10	271	161 514 403	0.523	161 514 413	0.426	161 514 433	0.534
1	25	10	481	161 514 404	0.678	161 514 414	0.679	161 514 434	0.693
1 ¼	32	10	759	161 514 405	1.429	161 514 415	0.957	161 514 435	1.449
1 ½	40	10	1263	161 514 406	2.528	161 514 416	1.654	161 514 436	2.558
2	50	10	1728	161 514 407	3.449	161 514 417	3.449	161 514 437	3.477

table continued on the next page



Rp (inch)	FPM Code	Weight (kg)	D (mm)	D2 (mm)	D3 (mm)	H (mm)	H1 (mm)	H2 (mm)	L (mm)	L2 (mm)	M	z (mm)	Lift = Hx (mm)
½	161 514 462	0.400	65	65	43	73	14	12	128	25	M6	96	7
¾	161 514 463	0.523	80	65	51	81	18	12	152	25	M6	114	10
1	161 514 464	1.163	88	87	58	107	22	12	166	25	M6	122	13
1 ¼	161 514 465	1.429	101	87	72	115	26	15	192	45	M8	140	15
1 ½	161 514 466	2.528	117	135	83	148	32	15	222	45	M8	160	19
2	161 514 467	3.449	144	135	100	166	39	15	266	45	M8	190	25



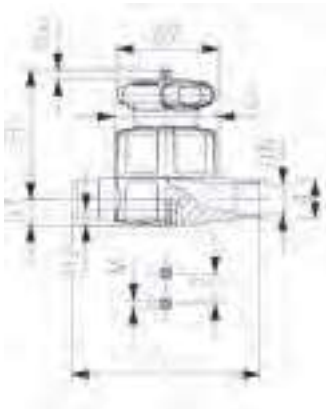
Diaphragm valve type 515 PVC-U
With solvent cement spigots metric

Model:

- Double flow rate compared to predecessor
- One housing nut replaces four screws
- Handwheel with built-in locking mechanism
- Overall length EN 558

Option:

- Individual configuration of the valve (see diagram)
- Self adjusting multifunctional module with integrated limit switches
- PN16 available as a configuration



d (mm)	DN (mm)	PN (bar)	kv-value (Δp=1 bar) (l/min)	NBR Code	Weight (kg)	EPDM Code	Weight (kg)	PTFE/EPDM Code	Weight (kg)
20	15	10	125	161 515 002	0.335	161 515 012	0.240	161 515 032	0.238
25	20	10	271	161 515 003	0.445	161 515 013	0.445	161 515 033	0.456
32	25	10	481	161 515 004	0.565	161 515 014	0.568	161 515 034	0.575
40	32	10	759	161 515 005	1.237	161 515 015	1.237	161 515 035	1.257
50	40	10	1263	161 515 006	1.363	161 515 016	1.364	161 515 036	2.292
63	50	10	1728	161 515 007	2.963	161 515 017	2.248	161 515 037	2.097

d (mm)	FPM Code	Weight (kg)	D (mm)	D2 (mm)	H (mm)	H1 (mm)	H2 (mm)	L (mm)	L2 (mm)	M	Lift = Hx (mm)	closest inch (inch)
20	161 515 062	0.243	65	65	73	14	12	124	25	M6	7	½
25	161 515 063	0.445	80	65	81	18	12	144	25	M6	10	¾
32	161 515 064	1.032	88	87	107	22	12	154	25	M6	13	1
40	161 515 065	0.785	101	87	115	26	15	174	45	M8	15	1 ¼
50	161 515 066	2.262	117	135	148	32	15	194	45	M8	19	1 ½
63	161 515 067	2.963	144	135	166	39	15	224	45	M8	25	2



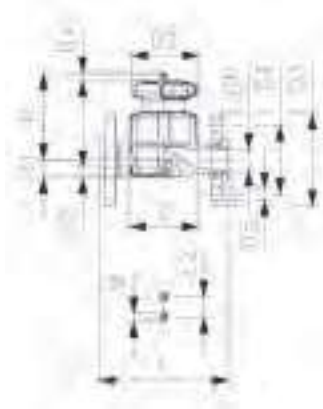
Diaphragm valve type 517 PVC-U
With backing flanges PVC-U metric/BS

Model:

- Double flow rate compared to predecessor
- One housing nut replaces four screws
- Handwheel with built-in locking mechanism
- Flat sealing faces
- Overall length EN 558
- Connecting dimension: ISO 7005 PN 10, EN 1092 PN 10, DIN 2501 PN 10, BS 4504 PN 10

Option:

- Individual configuration of the valve (see diagram)
- Self adjusting multifunctional module with integrated limit switches



d (mm)	DN (mm)	PN (bar)	kv-value ($\Delta p=1$ bar) (l/min)	NBR Code	Weight (kg)	EPDM Code	Weight (kg)	PTFE/EPDM Code	Weight (kg)
20	15	10	125	161 517 002	0.493	161 517 012	0.395	161 517 032	0.503
25	20	10	271	161 517 003	0.661	161 517 013	0.558	161 517 033	0.672
32	25	10	481	161 517 004	1.344	161 517 014	0.887	161 517 034	1.364
40	32	10	759	161 517 005	1.352	161 517 015	1.230	161 517 035	1.247
50	40	10	1263	161 517 006	2.868	161 517 016	1.962	161 517 036	1.992
63	50	10	1728	161 517 007	3.789	161 517 017	2.893	161 517 037	2.939

d (mm)	FPM Code	Weight (kg)
20	161 517 062	0.493
25	161 517 063	0.661
32	161 517 064	0.895
40	161 517 065	1.352
50	161 517 066	2.868
63	161 517 067	2.943

d (mm)	D (mm)	D2 (mm)	D3 (mm)	D4 (mm)	D5 (mm)	H (mm)	H1 (mm)	H2 (mm)	L (mm)	L2 (mm)	M	Lift = Hx (mm)	closest inch (inch)
20	65	65	95	65	14	73	14	12	130	25	M6	7	½
25	80	65	105	75	14	81	18	12	150	25	M6	10	¾
32	88	87	115	85	14	107	22	12	160	25	M6	13	1
40	101	87	140	100	18	115	26	15	180	45	M8	15	1 ¼
50	117	135	150	110	18	148	32	15	200	45	M8	19	1 ½
63	144	135	165	125	18	166	39	15	230	45	M8	25	2