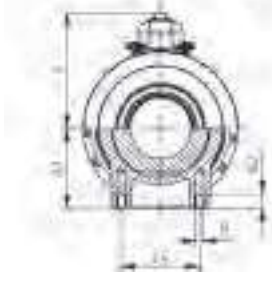
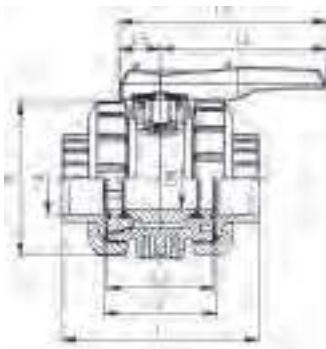
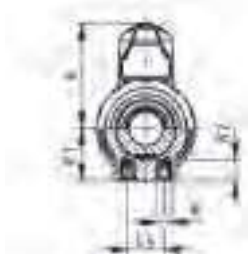
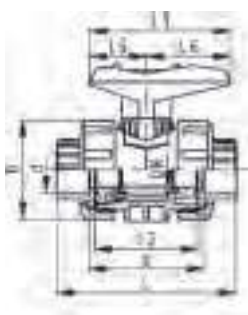


# Ball valve type 546



**Ball valve type 546 PVC-U**  
**With mounting inserts**  
**With solvent cement sockets metric**

**Model:**

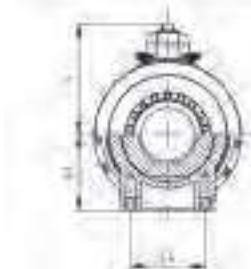
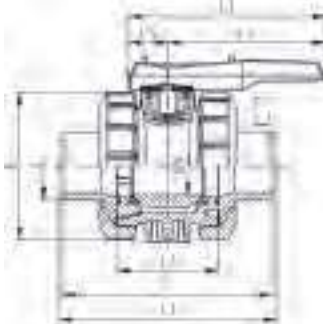
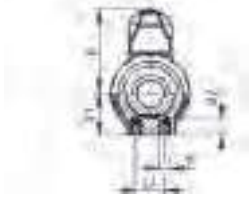
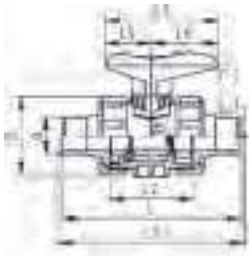
- For easy installation and removal
- Ball seals PTFE
- Integrated stainless steel mounting inserts
- z-dimension, valve end and union nut are **not compatible** with type 346 (DN10/15-50) resp. type 370 (DN65-100)

**Option:**

- Individual configuration of the valve (see diagram)
- Multifunctional module with integrated limit switches
- Pneumatic or electric actuators from +GF+

d	Size	DN	PN	kv-value	EPDM	Weight	FPM	Weight
(mm)	(inch)	(mm)	(bar)	( $\Delta p=1$ bar)	Code	(kg)	Code	(kg)
16		10	16	71	<b>161 546 061</b>	0.153	<b>161 546 071</b>	0.156
20		15	16	185	<b>161 546 062</b>	0.156	<b>161 546 072</b>	0.158
25		20	16	350	<b>161 546 063</b>	0.240	<b>161 546 073</b>	0.242
32		25	16	700	<b>161 546 064</b>	0.343	<b>161 546 074</b>	0.345
40		32	16	1000	<b>161 546 065</b>	0.610	<b>161 546 075</b>	0.615
50		40	16	1600	<b>161 546 066</b>	0.838	<b>161 546 076</b>	0.844
63		50	16	3100	<b>161 546 067</b>	1.537	<b>161 546 077</b>	1.552
75	2 ½	65	16	5000	<b>161 546 068</b>	4.343	<b>161 546 078</b>	3.563
90		80	16	7000	<b>161 546 069</b>	6.184	<b>161 546 079</b>	5.376
110		100	16	11000	<b>161 546 070</b>	8.642	<b>161 546 080</b>	11.600

d	D	H	H1	H2	L	L1	L2	L4	L5	L6	M	z	closest
(mm)	(mm)	(mm)	(mm)	(mm)	(mm)	(mm)	(mm)	(mm)	(mm)	(mm)	(mm)	(mm)	inch
16	50	57	27	12	92	77	56	25	32	45	6	64	¾
20	50	57	27	12	95	77	56	25	32	45	6	64	½
25	58	67	30	12	110	97	65	25	39	58	6	72	¾
32	68	73	36	12	123	97	71	25	39	58	6	79	1
40	84	90	44	15	146	128	85	45	54	74	8	94	1 ¼
50	97	97	51	15	157	128	89	45	54	74	8	95	1 ½
63	124	116	64	15	183	152	101	45	66	87	8	107	2
75	166	149	85	15	233	270	136	70	64	206	8	144	2 ½
90	200	161	105	15	254	270	141	70	64	206	8	151	3
110	238	178	123	22	301	320	164	120	64	256	12	174	4



**Ball valve type 546 PVC-U**  
**With mounting inserts**  
**With solvent cement spigots metric**

**Model:**

- For easy installation and removal
- Ball seals PTFE
- Integrated stainless steel mounting inserts
- z-dimension, valve end and union nut are **not compatible** with type 346 (DN10/15-50) resp. type 370 (DN65-100)

**Option:**

- Individual configuration of the valve (see diagram)
- Multifunctional module with integrated limit switches
- Pneumatic or electric actuators from +GF+

d (mm)	DN (mm)	PN (bar)	kv-value ( $\Delta p=1$ bar) (L/min)	EPDM Code	Weight (kg)	FPM Code	Weight (kg)
16	10	16	71	161 546 721	0.157	161 546 731	0.157
20	15	16	185	161 546 722	0.157	161 546 732	0.157
25	20	16	350	161 546 723	0.242	161 546 733	0.242
32	25	16	700	161 546 724	0.359	161 546 734	0.347
40	32	16	1000	161 546 725	0.620	161 546 735	0.620
50	40	16	1600	161 546 726	0.869	161 546 736	0.845
63	50	16	3100	161 546 727	1.550	161 546 737	1.550
75	65	16	5000	161 546 728	3.689	161 546 738	5.100
90	80	16	7000	161 546 729	5.512	161 546 739	7.500
110	100	16	11000	161 546 730	11.900	161 546 740	11.900

d (mm)	D (mm)	H (mm)	H1 (mm)	H2 (mm)	L (mm)	L1 (mm)	L2 (mm)	L3 (mm)	L4 (mm)	L5 (mm)	L6 (mm)	M	closest inch (inch)
16	50	57	27	12	114	77	56	130	25	32	45	M6	3/8
20	50	57	27	12	124	77	56	130	25	32	45	M6	1/2
25	58	67	30	12	144	97	65	150	25	39	58	M6	3/4
32	68	73	36	12	154	97	71	160	25	39	58	M6	1
40	84	90	44	15	174	128	85	180	45	54	74	M8	1 1/4
50	97	97	51	15	194	128	89	200	45	54	74	M8	1 1/2
63	124	116	64	15	224	152	101	230	45	66	87	M8	2
75	166	149	85	15	284	270	136	290	70	64	206	M8	2 1/2
90	200	161	105	15	300	270	141	310	70	64	206	M8	3
110	238	178	123	22	340	320	164	350	120	64	256	M12	4



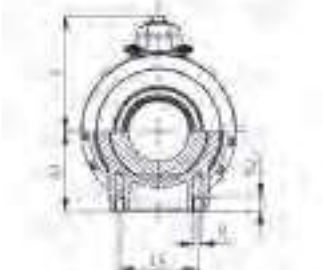
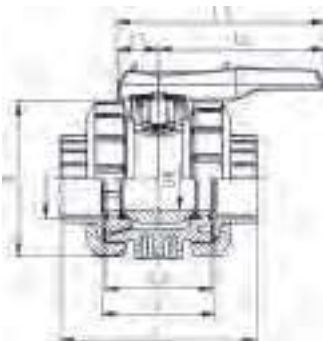
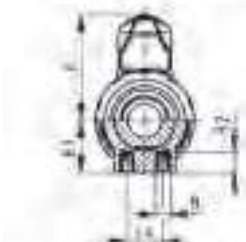
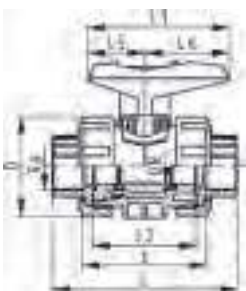
**Ball valve type 546 PVC-U**  
**With mounting inserts**  
**With threaded sockets Rp**

**Model:**

- For easy installation and removal
- Ball seals PTFE
- Integrated stainless steel mounting inserts
- z-dimension, valve end and union nut are **not compatible** with type 346 (DN10/15-50) resp. type 370 (DN65-100)

**Option:**

- Individual configuration of the valve (see diagram)
- Multifunctional module with integrated limit switches
- Pneumatic or electric actuators from +GF+



Rp	DN	PN	kv-value	EPDM	Weight	FPM	Weight
(inch)	(mm)	(bar)	( $\Delta p=1$ bar)	Code	(kg)	Code	(kg)
			(L/min)				
3/8	10	10	71	<b>161 546 741</b>	0.152	<b>161 546 751</b>	0.152
1/2	15	10	185	<b>161 546 742</b>	0.159	<b>161 546 752</b>	0.152
3/4	20	10	350	<b>161 546 743</b>	0.242	<b>161 546 753</b>	0.232
1	25	10	700	<b>161 546 744</b>	0.352	<b>161 546 754</b>	0.332
1 1/4	32	10	1000	<b>161 546 745</b>	0.605	<b>161 546 755</b>	0.605
1 1/2	40	10	1600	<b>161 546 746</b>	0.805	<b>161 546 756</b>	0.805
2	50	10	3100	<b>161 546 747</b>	1.580	<b>161 546 757</b>	1.465
2 1/2	65	10	5000	<b>161 546 748</b>	5.000	<b>161 546 758</b>	5.000
3	80	10	7000	<b>161 546 749</b>	1.000	<b>161 546 759</b>	7.500
4	100	10	11000	<b>161 546 750</b>	11.700	<b>161 546 760</b>	11.700

Rp	D	H	H1	H2	L	L1	L2	L4	L5	L6	M	z
(inch)	(mm)	(mm)	(mm)	(mm)	(mm)	(mm)	(mm)	(mm)	(mm)	(mm)		(mm)
3/8	50	57	27	12	95	77	56	25	32	45	M6	69
1/2	50	57	27	12	100	77	56	25	32	45	M6	67
3/4	58	67	30	12	114	97	65	25	39	58	M6	78
1	68	73	36	12	127	97	71	25	39	58	M6	85
1 1/4	84	90	44	15	146	128	85	45	54	74	M8	100
1 1/2	97	97	51	15	152	128	89	45	54	74	M8	106
2	124	116	64	15	177	152	101	45	66	87	M8	121
2 1/2	166	149	85	15	233	270	136	70	64	206	M8	144
3	200	161	105	15	254	270	141	70	64	206	M8	151
4	238	178	123	22	301	320	164	120	64	256	M12	174



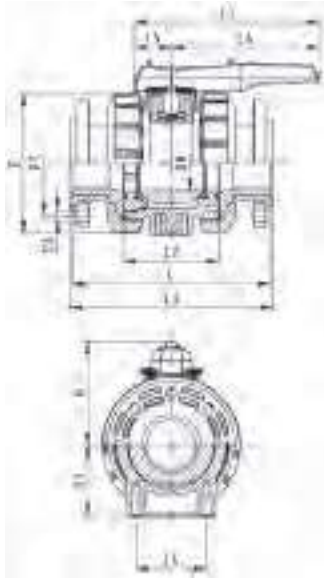
**Ball valve type 546 PVC-U**  
**With mounting inserts**  
**With backing flanges PVC-U metric**

**Model:**

- For easy installation and removal
- Ball seals PTFE
- Integrated stainless steel mounting inserts
- z-dimension, valve end and union nut are **not compatible** with type 346 (DN10/15-50) resp. type 370 (DN65-100)
- Overall length according to EN 558
- Connecting dimension: ISO 7005 PN10, EN 1092 PN10, DIN 2501 PN10

**Option:**

- Individual configuration of the valve (see diagram)
- Multifunctional module with integrated limit switches
- Pneumatic or electric actuators from +GF+



d	DN	PN	kv-value	EPDM	Weight	FPM	Weight
(mm)	(mm)	(bar)	( $\Delta p=1$ bar)	Code	(kg)	Code	(kg)
			(l/min)				
75	65	10	5000	<b>161 546 108</b>	4.764	<b>161 546 118</b>	7.200
90	80	10	7000	<b>161 546 109</b>	6.983	<b>161 546 119</b>	7.008
110	100	10	11000	<b>161 546 110</b>	11.879	<b>161 546 120</b>	16.500

d	D	H	H1	H2	L	L1	L2	L3	L4	L5	L6	M	closest
(mm)	(mm)	(mm)	(mm)	(mm)	(mm)	(mm)	(mm)	(mm)	(mm)	(mm)	(mm)		inch
													(inch)
75	166	149	85	15	284	270	136	290	70	64	206	M8	1 ¼
90	200	161	105	15	300	270	141	310	70	64	206	M8	1 ½
110	238	178	123	22	340	320	164	350	120	64	256	M12	2



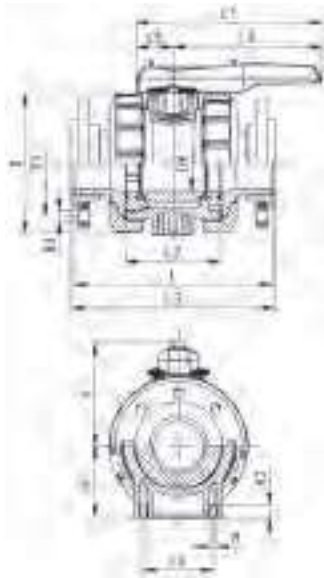
**Ball valve type 546 PVC-U**  
**With mounting inserts**  
**With backing flanges PP-st metric**

**Model:**

- For easy installation and removal
- Ball seals PTFE
- Integrated stainless steel mounting inserts
- z-dimension, valve end and union nut are **not compatible** with type 346 (DN10/15-50) resp. type 370 (DN65-100)
- Overall length according to EN 558
- Connecting dimension: ISO 7005, EN 1092, BS 4504, DIN 2501

**Option:**

- Individual configuration of the valve (see diagram)
- Multifunctional module with integrated limit switches
- Pneumatic or electric actuators from +GF+



d	DN	PN	kv-value	EPDM	Weight	FPM	Weight
(mm)	(mm)	(bar)	( $\Delta p=1$ bar)	Code	(kg)	Code	(kg)
			(l/min)				
75	65	16	5000	<b>161 546 948</b>	9.100	<b>161 546 958</b>	9.100
90	80	16	7000	<b>161 546 949</b>	12.400	<b>161 546 959</b>	12.400
110	100	16	11000	<b>161 546 950</b>	13.825	<b>161 546 960</b>	18.500

d	D	H	H1	L	L1	L2	L3	L4	L5	L6	closest
(mm)	(mm)	(mm)	(mm)	(mm)	(mm)	(mm)	(mm)	(mm)	(mm)	(mm)	inch
											(inch)
75	166	149	85	284	270	136	290	70	64	206	1 ¼
90	200	161	105	300	270	141	310	70	64	206	1 ½
110	238	178	123	340	320	164	350	120	64	256	2



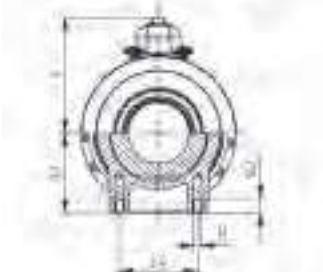
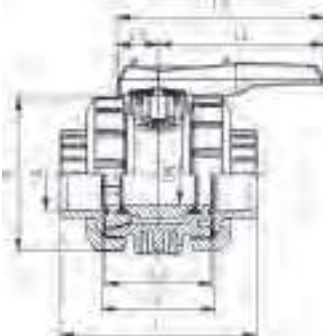
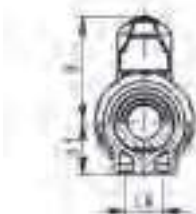
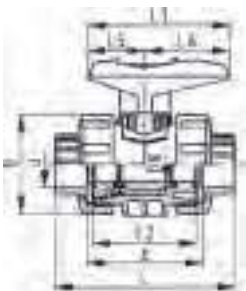
**Ball valve type 546 PVC-U**  
**With solvent cement sockets metric**

**Model:**

- For easy installation and removal
- Ball seals PTFE
- Without mounting inserts
- z-dimension, valve end and union nut are **not compatible** with type 346 (DN10/15-50) resp. type 370 (DN65-100)

**Option:**

- Individual configuration of the valve (see diagram)
- Multifunctional module with integrated limit switches
- Pneumatic or electric actuators from +GF+

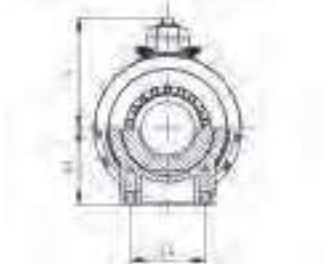
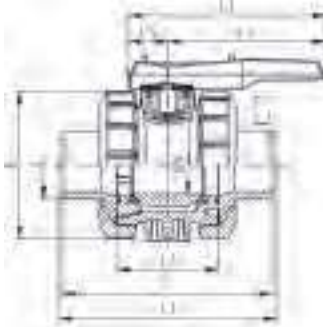
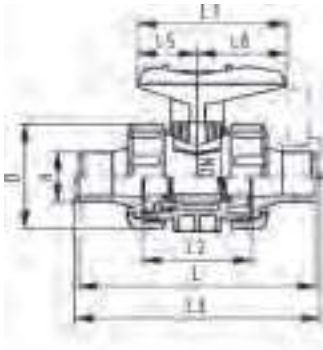


d (mm)	DN (mm)	PN (bar)	kv-value ( $\Delta p=1$ bar) (l/min)	EPDM Code	Weight (kg)	FPM Code	Weight (kg)
16	10	16	71	161 546 001	0.148	161 546 011	0.150
20	15	16	185	161 546 002	0.150	161 546 012	0.152
25	20	16	350	161 546 003	0.233	161 546 013	0.237
32	25	16	700	161 546 004	0.336	161 546 014	0.343
40	32	16	1000	161 546 005	0.600	161 546 015	0.603
50	40	16	1600	161 546 006	0.830	161 546 016	0.851
63	50	16	3100	161 546 007	1.523	161 546 017	1.542
75	65	16	5000	161 546 008	3.781	161 546 018	3.794
90	80	16	7000	161 546 009	5.338	161 546 019	7.400
110	100	16	11000	161 546 010	8.650	161 546 020	11.600

d (mm)	D (mm)	H (mm)	H1 (mm)	L (mm)	L1 (mm)	L2 (mm)	L4 (mm)	L5 (mm)	L6 (mm)	z (mm)	closest inch (inch)
16	50	57	27	92	77	56	25	32	45	64	¾
20	50	57	27	95	77	56	25	32	45	64	¾
25	58	67	30	110	97	65	25	39	58	72	¾
32	68	73	36	123	97	71	25	39	58	79	1
40	84	90	44	146	128	85	45	54	74	94	1 ¼
50	97	97	51	157	128	89	45	54	74	95	1 ½
63	124	116	64	183	152	101	45	66	87	107	2
75	166	149	85	233	270	136	70	64	206	144	2 ½
90	200	161	105	254	270	141	70	64	206	151	3
110	238	178	123	301	320	164	120	64	256	174	4



DN10/15 - 50



**Ball valve type 546 PVC-U**  
**With solvent cement spigots metric**

**Model:**

- For easy installation and removal
- Ball seals PTFE
- Without mounting inserts
- z-dimension, valve end and union nut are **not compatible** with type 346 (DN10/15-50) resp. type 370 (DN65-100)

**Option:**

- Individual configuration of the valve (see diagram)
- Multifunctional module with integrated limit switches
- Pneumatic or electric actuators from +GF+

d (mm)	DN (mm)	PN (bar)	kv-value ( $\Delta p=1$ bar) (l/min)	EPDM Code	Weight (kg)	FPM Code	Weight (kg)
16	10	16	71	161 546 041	0.155	161 546 051	0.155
20	15	16	185	161 546 042	0.155	161 546 052	0.155
25	20	16	350	161 546 043	0.240	161 546 053	0.240
32	25	16	700	161 546 044	0.351	161 546 054	0.345
40	32	16	1000	161 546 045	0.610	161 546 055	0.615
50	40	16	1600	161 546 046	0.840	161 546 056	0.840
63	50	16	3100	161 546 047	1.602	161 546 057	1.545
75	65	16	5000	161 546 048	5.100	161 546 058	5.100
90	80	16	7000	161 546 049	5.776	161 546 059	7.500
110	100	16	11000	161 546 050	11.900	161 546 060	11.900

d (mm)	D (mm)	H (mm)	H1 (mm)	L (mm)	L1 (mm)	L2 (mm)	L3 (mm)	L4 (mm)	L5 (mm)	L6 (mm)	closest inch (inch)
16	50	57	27	114	77	56		25	32	45	¾
20	50	57	27	124	77	56	130	25	32	45	¾
25	58	67	30	144	97	65	150	25	39	58	¾
32	68	73	36	154	97	71	160	25	39	58	1
40	84	90	44	174	128	85	180	45	54	74	1 ¼
50	97	97	51	194	128	89	200	45	54	74	1 ½
63	124	116	64	224	152	101	230	45	66	87	2
75	166	149	85	284	270	136	290	70	64	206	2 ½
90	200	161	105	300	270	141	310	70	64	206	3
110	238	178	123	340	320	164	350	120	64	256	4



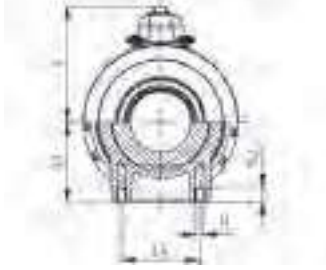
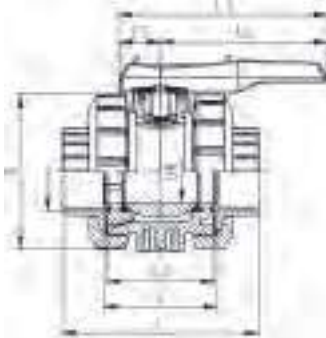
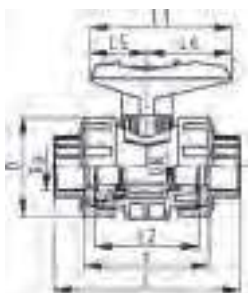
**Ball valve type 546 PVC-U  
With threaded sockets Rp**

**Model:**

- For easy installation and removal
- Ball seals PTFE
- Without mounting inserts
- z-dimension, valve end and union nut are **not compatible** with type 346 (DN10/15-50) resp. type 370 (DN65-100)

**Option:**

- Individual configuration of the valve (see diagram)
- Multifunctional module with integrated limit switches
- Pneumatic or electric actuators from +GF+



Rp (inch)	DN (mm)	PN (bar)	kv-value ( $\Delta p=1$ bar) (l/min)	EPDM Code	Weight (kg)	FPM Code	Weight (kg)
3/8	10	10	71	161 546 021	0.150	161 546 031	0.150
1/2	15	10	185	161 546 022	0.155	161 546 032	0.150
3/4	20	10	350	161 546 023	0.238	161 546 033	0.230
1	25	10	700	161 546 024	0.348	161 546 034	0.330
1 1/4	32	10	1000	161 546 025	0.603	161 546 035	0.600
1 1/2	40	10	1600	161 546 026	0.800	161 546 036	0.800
2	50	10	3100	161 546 027	1.575	161 546 037	1.460
2 1/2	65	10	5000	161 546 028	5.000	161 546 038	5.000
3	80	10	7000	161 546 029	5.437	161 546 039	7.500
4	100	10	11000	161 546 030	11.700	161 546 040	11.700

Rp (inch)	D (mm)	H (mm)	H1 (mm)	L (mm)	L1 (mm)	L2 (mm)	L4 (mm)	L5 (mm)	L6 (mm)	z (mm)
3/8	50	57	27	95	77	56	25	32	45	69
1/2	50	57	27	100	77	56	25	32	45	67
3/4	58	67	30	114	97	65	25	39	58	78
1	68	73	36	127	97	71	25	39	58	85
1 1/4	84	90	44	146	128	85	45	54	74	100
1 1/2	97	97	51	152	128	89	45	54	74	106
2	124	116	64	177	152	101	45	66	87	121
2 1/2	166	149	85	233	270	136	70	64	206	144
3	200	161	105	254	270	141	70	64	206	151
4	238	178	123	301	320	164	120	64	256	174



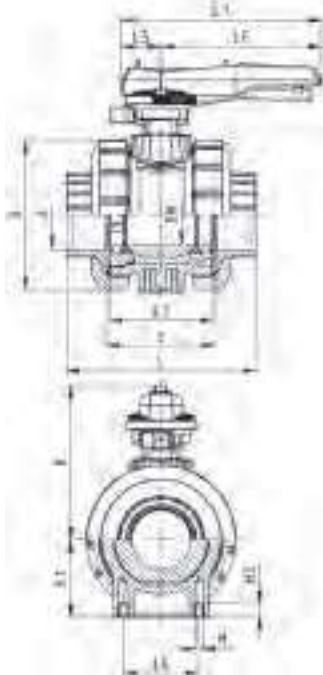
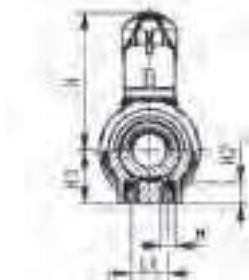
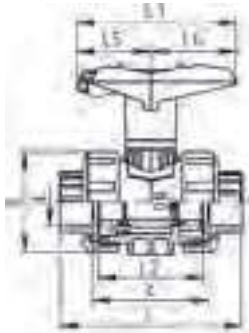
**Ball valve type 546 PVC-U**  
**With lockable handle**  
**With solvent cement sockets metric**

**Model:**

- For easy installation and removal
- Ball seals PTFE
- Integrated stainless steel mounting inserts
- z-dimension, valve end and union nut are **not compatible** with type 346 (DN10/15-50) resp. type 370 (DN65-100)
- Lockable hand lever with ratchet settings

**Option:**

- Individual configuration of the valve (see diagram)
- Multifunctional module with integrated limit switches
- Pneumatic or electric actuators from +GF+



d	Size	DN	PN	kv-value	EPDM	Weight	FPM	Weight
(mm)	(inch)	(mm)	(bar)	( $\Delta p=1$ bar)	Code	(kg)	Code	(kg)
				(l/min)				
16		10	16	71	161 546 081	0.165	161 546 091	0.165
20		15	16	185	161 546 082	0.165	161 546 092	0.165
25		20	16	350	161 546 083	0.255	161 546 093	0.255
32		25	16	700	161 546 084	0.364	161 546 094	0.355
40		32	16	1000	161 546 085	0.640	161 546 095	0.640
50		40	16	1600	161 546 086	0.840	161 546 096	0.840
63		50	16	3100	161 546 087	1.571	161 546 097	1.500
75	2 1/2	65	16	5000	161 546 088	5.200	161 546 098	5.200
90		80	16	7000	161 546 089	7.700	161 546 099	7.700
110		100	16	11000	161 546 090	12.000	161 546 100	12.000

d	D	H	H1	H2	L	L1	L2	L4	L5	L6	M	z	closest
(mm)	(mm)	(mm)	(mm)	(mm)	(mm)	(mm)	(mm)	(mm)	(mm)	(mm)		(mm)	inch
													(inch)
16	50	79	27	12	92	87	56	25	42	45	M6	64	3/8
20	50	79	27	12	95	87	56	25	42	45	M6	64	1/2
25	58	88	30	12	110	108	65	25	50	58	M6	72	3/4
32	68	94	36	12	123	108	71	25	50	58	M6	79	1
40	84	113	44	15	146	140	85	45	66	75	M8	94	1 1/4
50	97	119	51	15	157	140	89	45	66	75	M8	95	1 1/2
63	124	141	64	15	183	165	101	45	78	87	M8	107	2
75	166	224	85	15	233	270	136	70	64	206	M8	144	2 1/2
90	200	235	105	15	254	270	141	70	64	206	M8	151	3
110	238	245	123	22	301	320	164	120	64	256	M12	174	4



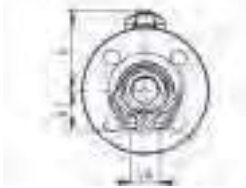
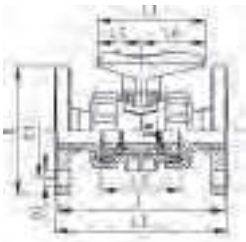
**Ball valve type 546 PVC-U**  
**With fixed flanges PVC-U serrated metric**

**Model:**

- For easy installation and removal
- Ball seals PTFE
- Without mounting inserts
- z-dimension, valve end and union nut are not compatible with type 346
- Overall length according to EN 558
- Connecting dimension: ISO 7005 PN10, EN 1092 PN10, DIN 2501 PN10

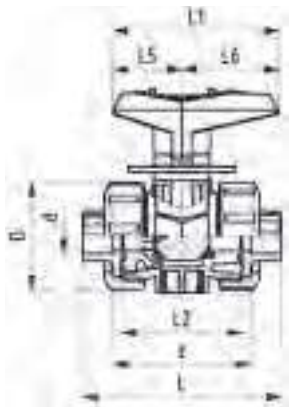
**Option:**

- Individual configuration of the valve (see diagram)
- Multifunctional module with integrated limit switches
- Pneumatic or electric actuators from +GF+



d (mm)	DN (mm)	PN (bar)	kv-value ( $\Delta p=1$ bar) (l/min)	EPDM Code	Weight (kg)	FPM Code	Weight (kg)
20	15	16	185	800 000 182	0.370	800 000 192	0.370
25	20	16	350	800 000 183	0.510	800 000 193	0.510
32	25	16	700	800 000 184	0.724	800 000 194	0.727
40	32	16	1000	800 000 185	1.235	800 000 195	1.230
50	40	16	1600	800 000 186	1.609	800 000 196	1.621
63	50	16	3100	800 000 187	2.636	800 000 197	2.653

d (mm)	D (mm)	D1 (mm)	D3 (mm)	H (mm)	H1 (mm)	L (mm)	L1 (mm)	L2 (mm)	L3 (mm)	L4 (mm)	L5 (mm)	L6 (mm)	closest inch (inch)
20	95	65	14	57	27	124	77	56	130	25	32	45	½
25	105	75	14	67	30	144	97	65	150	25	39	58	¾
32	115	85	14	73	36	154	97	71	160	25	39	58	1
40	140	100	18	90	44	174	128	85	180	45	54	74	1 ¼
50	150	110	18	97	51	194	128	89	200	45	54	74	1 ½
63	165	125	18	116	64	224	152	101	230	45	66	87	2



**Linear ball valve type 546 PVC-U**  
**With mounting inserts**  
**With solvent cement sockets metric**

**Model:**

- Excellent control characteristics
- Designed for easy installation and removal
- Ball seals PTFE
- Angle of operation 90° with scale
- Integrated stainless steel mounting inserts

**Option:**

- Individual configuration of the valve (see diagram)
- Pneumatic or electric actuators from +GF+
- Other materials on demand

d (mm)	DN (mm)	PN (bar)	kv-value ( $\Delta p=1$ bar) (L/min)	EPDM Code	Weight (kg)
20	15	10	185	<b>800 052 602</b>	0.156
25	20	10	350	<b>800 052 603</b>	0.240
32	25	10	700	<b>800 052 604</b>	0.343
40	32	10	1000	<b>800 052 605</b>	0.610
50	40	10	1600	<b>800 052 606</b>	0.838
63	50	10	3100	<b>800 052 607</b>	1.537

d (mm)	D (mm)	H (mm)	H1 (mm)	L (mm)	L1 (mm)	L2 (mm)	L4 (mm)	L5 (mm)	L6 (mm)	z (mm)	closest inch (inch)
20	50	57	27	95	77	56	25	32	45	64	½
25	58	67	30	110	97	65	25	39	58	72	¾
32	68	73	36	123	97	71	25	39	58	79	1
40	84	90	44	146	128	85	45	54	74	94	1 ¼
50	97	97	51	157	128	89	45	54	74	95	1 ½
63	124	116	64	183	152	101	45	66	87	107	2

# Product Configurator

Create your own ball valve

## Variant Type

- A01 Ball Valve 2-Way
- A02 Linear Ball Valve 2-Way

## Material

- B01 PVC-U

## Diameter

- C05 d16 DN10 3/8"
- C06 d20 DN15 1/2"
- C07 d25 DN20 3/4"
- C08 d32 DN25 1"
- C09 d40 DN32 1 1/4"
- C10 d50 DN40 1 1/2"
- C11 d63 DN50 2"
- C12 d75 DN65 2 1/2"
- C13 d90 DN80 3"
- C14 d100 DN100 4"

## Treatment

- D01 Standard PTFE Ball Seal
- D02 Oil-Free PTFE Ball Seal
- D03 Silicone-Free/Paint Compatible PTFE Ball Seal (ASTM)
- D04 Silicone-Free/Paint Compatible PVDF Ball Seal (ISO)

## Sealmaterial

- E01 EPDM
- E02 FPM
- E03 FFPM

## Threaded Inserts

- F02 With Threaded Inserts

## Endings\*

- G01 PVC-U Solvent Cement Socket ISO
- ...
- G80 PVC-U PVC-U Valve End blank

## \*Endings

- G01 PVC-U Solvent Cement Socket ISO
- G02 PVC-U Solvent Cement Socket JIS
- G03 PVC-U Solvent Cement Socket ASTM
- G04 PVC-U Solvent Cement Socket BS
- G05 PVC-U Solvent Cement Spigot ISO
- G06 PVC-U Threaded Socket ISO Rp
- G07 PVC-U Threaded Socket ISO Rp Reinforced
- G08 PVC-U Threaded Socket ISO/JIS Rc
- G09 PVC-U Threaded Socket ASTM NPT
- G53 PVDF Threaded Socket ASTM NPT
- G60 Fixed Flange PVC-U gerillt metrisch
- G61 Fixed Flange PVC-U flach ISO
- G62 Fixed Flange PVC-U JIS
- G70 Backing Flange PVC-U ISO
- G70150 Backing Flange PVC-U ISO d160 DN150
- G71 Backing Flange PVC-U ANSI
- G71150 Backing Flange PVC-U ANSI 6" DN150
- G72PVCU Backing Flange PP-Stahl ISO with PVC-U Endings
- G72PVCU150 Backing Fl. PP-Steel ISO d160 DN150 with PVC-U Endings
- G73PVCU PVCU Backing Flange PP-Stahl ANSI with PVC-U Endings
- G73PVCU150 PVCU150 Backing Fl. PP-Steel ANSI 6" DN150 with PVC-U Endings
- G78PVCU PVCU Backing Flange PVC-U JIS with PVC-U Endings
- G78PVCU150 PVCU150 Backing Fl. PVC-U JIS d160 DN150 with PVC-U Endings
- G80 PVC-U PVC-U Valve End blank

## Mounting plate

- L02 With Mounting Plate

## Multi-Functional Module (MFM)

- I01 Standard Interface
- I02 Empty Multi-Functional Module
- I03 Multi-Functional Module with 2 Limit Switches Ag, Ni
- I04 Multi-Functional Module with 2 Limit Switches Au
- I05 Multi-Functional Module with 2 Inductive Switches Namur
- I06 Multi-Functional Module with 2 Inductive Switches PNP
- I07 Multi-Functional Module with 2 Inductive Switches NPN

## Manual Operation

- K01 Standard Lever Red
- K02 Standard Lever Black
- K11 Multi-Functional/Ratched Lever Red



A01 B01 C08 D01 E01 F02 G01 L02 I01 K01 =