



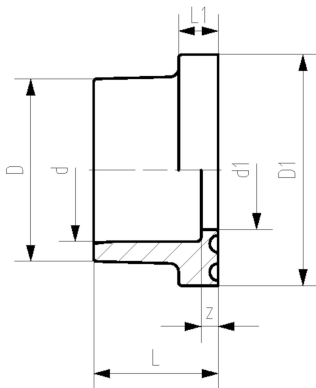
## Flange adaptor ABS metric

### Model:

- Counter part: same flange adaptor
- Gasket: profile flange gasket EPDM code no. 748 440 706-723, FKM code no. 749 440 706-723
- Gasket: flat gasket EPDM code no. 748 400 306-323
- Joining faces flat/serrated
- >d225 - maximum operating temperature: +40°C

### Note:

\* bevel on pipe may be needed if used with butterfly valve type 037/038/039



d (mm)	d (inch)	DN (mm)	PN (bar)	Code	SP	Weight (kg)
20		15	10	729 790 106	10	0.007
25		20	10	729 790 107	10	0.015
32		25	10	729 790 108	10	0.020
40		32	10	729 790 109	10	0.028
50		40	10	729 790 110	10	0.038
63		50	10	729 790 111	10	0.068
75	2 ½	65	10	729 790 112	10	0.116
90		80	10	729 790 113	10	0.185
110		100	10	729 790 114	10	0.305
140	5	125	10	729 790 116	6	0.535
* 160		150	10	729 790 117	2	0.821
* 200		200	10	729 790 119	2	1.123
225		200	10	729 790 120	2	1.330
250		250	6	729 790 121	1	1.699
280		250	6	729 790 122	1	2.183
315		300	6	729 790 123	1	3.321

d (mm)	D (mm)	D1 (mm)	d1 (mm)	L (mm)	L1 (mm)	z (mm)	closest inch (inch)
20	27	34	16	21	6	3	½
25	33	41	21	24	7	3	¾
32	41	50	28	27	7	3	1
40	50	61	36	30	8	3	1 ¼
50	61	73	45	34	8	3	1 ½
63	76	90	57	41	9	3	2
75	91	106	69	47	10	3	2 ½
90	108	125	82	56	11	5	3
110	131	150	102	66	12	5	4
140	165	188	132	81	14	5	5
* 160	188	213	152	91	16	5	6
* 200	224	250	192	112	24	6	8
225	248	274	217	125	25	6	8
250	274	303	240	140	23	9	9
280	307	329	270	151	23	5	10
315	346	379	302	172	27	8	12

The technical data are not binding. They neither constitute expressly warranted characteristics nor guaranteed properties nor a guaranteed durability. They are subject to modification. Our General Terms of Sale apply.

Georg Fischer Piping Systems Ltd, Postfach, CH-8201 Schaffhausen/Switzerland

Phone +41 -(0)52-631 1111

e-mail: info.ps@georgfischer.com

# Data sheet

valid from: 6/29/17

---



Internet: <http://www.gfps.com>