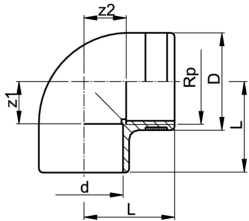




## Elbow 90° ABS metric Rp

### Model:

- With solvent cement socket metric and parallel female thread Rp
- Reinforcing ring stainless (A2)
- Connection to plastic or metal threads
- Install with low mechanical stress and avoid large cyclic temperature changes
- Do not use thread sealing pastes that are harmful to ABS



d (mm)	Rp (inch)	PN (bar)	Code	SP	Weight (kg)	z1 (mm)	z2 (mm)	D (mm)	L (mm)
20	½	10	<b>729 100 206</b>	10	0.018	13	11	30	27
25	¾	10	<b>729 100 207</b>	10	0.028	16	15	35	33
32	1	10	<b>729 100 208</b>	10	0.047	19	19	45	39
40	1 ¼	10	<b>729 100 209</b>	10	0.088	23	27	55	50
50	1 ½	10	<b>729 100 210</b>	5	0.128	27	36	62	58
63	2	10	<b>729 100 211</b>	5	0.233	33	46	75	73

The technical data are not binding. They neither constitute expressly warranted characteristics nor guaranteed properties nor a guaranteed durability. They are subject to modification. Our General Terms of Sale apply.

Georg Fischer Piping Systems Ltd, Postfach, CH-8201 Schaffhausen/Switzerland

Phone +41 -(0)52-631 1111

e-mail: [info.ps@georgfischer.com](mailto:info.ps@georgfischer.com)

Internet: <http://www.gfps.com>